

BRAZIL - PANTANAL & BONITO EXTENSION | CAIMAN ECO LODGE



INTRODUCTION

Stay in the heart of the Pantanal at Caiman Ecolodge. This intimate accommodation provides the perfect base for exploring what is the world's largest wetlands. You will have two full days to enjoy included and optional excursions to the Pantanal including 4WD safari's, birdwatching, hiking, canoeing and more. From Caiman Ecolodge, you will continue to Bonito where you will enjoy two snorkelling experiences on the Sucuri and Olho D'agua Rivers. You will also journey to Buraco das Aras, one of the largest sink holes in the world.

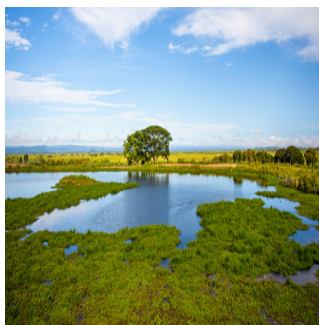
We also have a standard option available at [Pousada Aguape](#).


Pricing and availability is subject to change and offer and may be withdrawn or varied at any time. Please [contact us](#) for the latest availability.

ITINERARY

DAY 1: Arrival in the Pantanal

From Campo Grande airport you will be transferred to Caiman Ecolodge, your superior accommodation located in the heart of the Pantanal. Situated in Cuyabeno Reserve, these intimate lodges will be your base for exploration for the coming days. Settle into your surroundings after your arrival by kicking back in a hammock or taking in the rainforest canopy from the viewing tower.

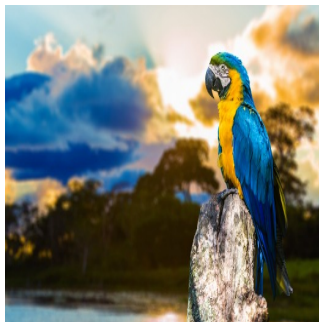


TRIP CODE
BRTSPX5-SUP
DEPARTURE
Daily
DURATION
6 Days
LOCATIONS
Brazil


BRAZIL - PANTANAL & BONITO EXTENSION | CAIMAN ECO LODGE

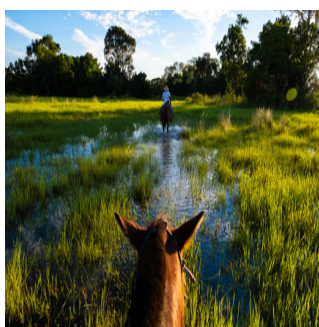
DAY 2: Pantanal day tour

Take an excursion to the Southern Pantanal with one of Caiman Ecolodge’s naturalist guides. They will teach you everything there is to know about the local flora, fauna and culture of the Pantanal region. Depending on your interest you can choose to take a 4WD safari, paddle on a canoe tour, take a walk on a hiking trail or enjoy a nocturnal spotlight tour of the forest.



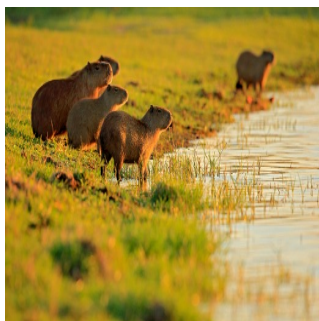
DAY 3: Pantanal day tour

Today you have an additional free day to enjoy more of the Pantanal. This time allows you to enjoy more of the included activities from day two or, alternatively, to book an optional excursion. Options include horseback riding, a bicycle tour, a visit to the Hyacinth Macaw Institute or a Oncafari to observe Jaguars in their natural habitat.



DAY 4: Rio Sucuri half day tour


Departing Caiman Ecolodge you will be transferred to Bonito, stopping enroute for a half day snorkelling the Sucuri River. Your snorkelling tour begins with a walk through the Riparian Forest of the Sucuri River where you can spot and observe animals such as the capybara in their native habitat. You will then enter the river to float downstream with snorkelling gear, observing a diverse array of fish and underwater plant life in the clear waters. The ecotourism hub of Bonito will be your base for the following days activities.



DAY 5: Rio de Prata Snorkelling & Buraco das Aras tour

This morning you will be given another opportunity to hike the Riparian Forest and snorkel, this time at Rio de Prata on the Olho D’agua River. You will again be amazed as you gaze at dozens of fish and aquatic plants as you snorkel the clear waters. In the afternoon you will take a tour to Buraco das Aras (Macaw Pit). This massive sink hole provides a habitat to 157 bird species and you can visit two of the main viewpoints to observe the birds within the sandstone crater.

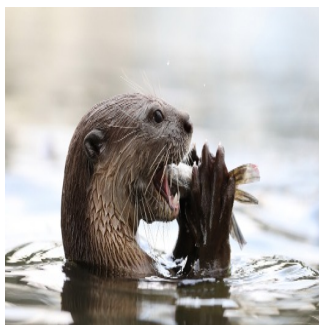



TRIP CODE
BRTSPX5-SUP
DEPARTURE
Daily
DURATION
6 Days
LOCATIONS
Brazil


BRAZIL - PANTANAL & BONITO EXTENSION | CAIMAN ECO LODGE

DAY 6: Depart Bonito

You will be transferred to the airport to depart for your next destination.



TRIP CODE
BRTSPX5-SUP
DEPARTURE
Daily
DURATION
6 Days
LOCATIONS
Brazil


INCLUSIONS & DETAILS

Accommodation	Jungle Lodge & Hotel
Inclusions	<p>Inclusions Accommodation Tours as mentioned Airport transfers All meals at Pantanal Lodge Breakfast daily in Bonito</p> <p>Exclusions International and internal flights not indicated Visa and reciprocity fees (if applicable) Local taxes (if applicable) Travel insurance Extra Beverages Personal expenses Gratuities for tour guides and drivers Any items not mentioned as included</p>
Difficulty Rating	1 (easy adventure)
Single Surcharge	A single supplement surcharge applies and is subject to availability. Please contact us for more information.
Notes	The order of activities are subject to change. Prices are based on per person, twin share. Prices are correct at time of publishing but are subject to change at any time. All entrance fees are subject to change without prior notice.
Price Dependent upon	Seasonality and availability at time of booking.

SUSTAINABILITY

TRIP CODE

BRTSPX5-SUP

DEPARTURE

Daily

DURATION

6 Days

LOCATIONS

Brazil

