



INTRODUCTION

Experience the Amazon's extraordinary flora and fauna while unwinding in one of the most luxurious Amazon lodges.

Climb the banks of the meandering Madre de Dios River, and enter another world. Wake to a symphony of tropical birdsong; end your days by lantern light, falling asleep to the gentle night noise of the Amazon rainforest. Exotic, yet accessible, Reserva Amazonica Lodge is situated in a private reserve, surrounded by a vast jungle canopy.

Please note that this is a suggested itinerary, you can choose your own rainforest adventure! Inkaterra Reserva Amazonica offers more than a dozen excursions. An interpreter meets with each guest upon arrival, shaping an ideal itinerary based on individual interests, desired activity levels, weather conditions, and length of stay.

On this all-encompassing personalised itinerary, Chimu will provide travel logistics for your travel party for the duration of your journey, plus expert guides for all the major sightseeing as per itinerary. Each night you will stay in superior accommodation, handpicked by our experienced team for their creature comforts, convenient locations, and impeccable service.

For another exceptional Amazon experience check out the [Refugio Amazonas](#) Extension.

ITINERARY

TRIP CODE
PETSRA4
DURATION
4 Days
LOCATIONS
Peru, Amazon

SOUTH AMERICA - PERU AMAZON EXTENSION | INKATERRA RESERVA AMAZONICA

DAY 1: Arrive Inkaterra Reserva Amazonica

Arrive into Puerto Maldonado, coined the Capital of Biodiversity. Transfer by road to the pier and begin your Amazon adventure with a 45-minute boat ride along the Madre de Dios River that splices through the rainforest. The motorized wooden boat hugs the meandering riverbanks to reach your eco-lodge, Inkaterra Reserva Amazonica, in the middle of the rainforest. After a short briefing, settle into your palm-thatched cabaña set within Peru's first ever private ecological reserve; established by Inkaterra in 1975, to protect this sensitive environment. After lunch, retreat to your rustic-luxury cabin for a nap or a swing in your hammock before choosing from the wide range of à-la-carte guided excursions with your expert Inkaterra Explorer Guide. We recommend walking along the Trail System for an immersive introduction into the intricate biodiversity of the Amazon basin and the layers of the rainforest. Walk along towering trees, like the Shihuahuaco, as your ears tune in to the croaks, rustles and calls of the exotic wildlife inhabiting this rich ecosystem. There are excellent opportunities for birding and observing an abundance of flora. Keep your camera ready just in case sloths or monkeys appear on the treetops. In the late afternoon, we highly recommend taking our gentle Twilight River excursion to witness the jungle transform from a diurnal to a nocturnal world: where daytime animals and birds give way to species specially adapted to the darkness of the night. You may also be able to spot the likes of nightjars, owls, capybaras and caimans lurking on the riverbanks. Amazonian-inspired dinner is served in the main dining room from 19:00-22:00 where we invite you to enjoy a complimentary Pisco Sour cocktail. Back in your comfy cabaña, listen to the intriguing sounds of critters that inhabit the rainforest surrounding the lodge. *Inkaterra Reserva Amazonica offers a wide range of A-la-carte activities and excursions that can be chosen on-site. The itinerary presented below is provided as an example and may be subject to changes.



TRIP CODE

PETSRA4

DURATION

4 Days

LOCATIONS

Peru, Amazon



SOUTH AMERICA - PERU AMAZON EXTENSION | INKATERRA RESERVA AMAZONICA

DAY 2: Amazon activities

As the sun rises and the jungle awakens, you have the option to join in with an early morning exploration. Enjoy a buffet breakfast from 05:30 before embarking on a visit to Lake Sandoval, a tranquil ox-bow lake nestled in the Tambopata National Reserve. The journey to the lake is an adventure in itself, a picturesque walk through sun-dappled rainforest trails followed by a peaceful dug-out canoe ride down a stream. Once you reach the lake, you'll be surrounded by picturesque palms and have the opportunity to spot many species of birds, as well as endangered creatures such as the giant river otter, red howler monkeys, red-bellied macaws, anacondas, side-neck turtles, and black caimans. Return to the Inkaterra Reserva Amazonica for lunch before continuing your exploration in the afternoon. We highly recommend taking on the Inkaterra Canopy Walkway, a 344-meter (1,135-foot) system of seven ecologically constructed hanging suspension bridges and eight treetop observation platforms above the forest floor. Admire the breathtaking view of the rainforest and its inhabitants, including toucans, woodpeckers, trogons, monkeys, and three-toed sloths. Once you return to the lodge, you can choose to unwind with a daily nature presentation in the Eco Centre or indulge in a spa treatment (additional cost applies). À-la-carte dinner is served from 19:00.



TRIP CODE

PETSRA4

DURATION

4 Days

LOCATIONS

Peru, Amazon

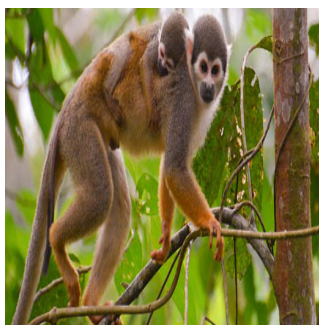


SOUTH AMERICA - PERU AMAZON EXTENSION | INKATERRA RESERVA AMAZONICA

DAY 3: Amazon activities

Embark on a 25-minute boat ride to Gamitana Farm and Creek, where you will discover more of the rainforest's wonders. The Amazon is an incredible source of exotic fruits and vegetables, many with healing properties that support the local communities. At Gamitana model farm, surrounded by the sights, sounds and aromas of the Amazon, you will witness how a variety of produce is grown by the local farmers and get to taste some seasonal forest fruits. Then, follow a dense jungle trail under the canopy to reach Gamitana Creek, a dark and winding waterway teeming with an array of flora and fauna.

Piranhas, caimans, turtles and birds can all be found hiding in its murky waters and riverbanks. Upon returning to Inkaterra Reserva Amazonica, enjoy a delicious lunch before embarking on a relaxing 30-minute canoe trip to search for turtles, sun grebes, nightjars and herons. As the sun sets and darkness falls, venture out for the Rainforest by Night excursion through Inkaterra's Ecological Reserve. Equipped with flashlights, your senses will be heightened as you duck under tree boughs and encounter animal activity, spotting species that only emerge with the veil of nightfall. Accompanied by your Inkaterra Explorer Guide, you will discover the movements and sounds of the nocturnal forest.



TRIP CODE

PETSRA4

DURATION

4 Days

LOCATIONS

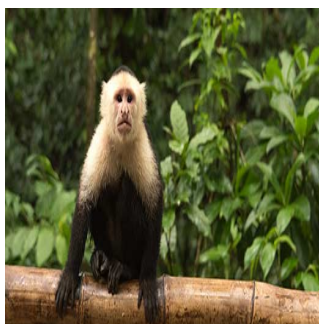
Peru, Amazon



DAY 4: Departure from Inkaterra Reserva Amazonica

With a staggering roster of wildlife found in and around Inkaterra Reserva Amazonica - 540 bird species have been inventoried in the grounds of the lodge - enjoy your last morning in this natural wonderland as parakeets chatter away in the trees and agouti mammals scurry between the cabañas. Check-out is at 10:00; depending on your departure flight time lunch can also be arranged today (additional cost applies). Embark your ready-waiting boat for the 45-minute return trip along the snaking Madre de Dios River until arriving at the airport. *Please note that the above description is a suggested itinerary.

Activities and excursions can be chosen on an à la carte basis on arrival at the lodge and are subject to change depending on weather conditions at the time of your visit, until arriving at the airport.



SOUTH AMERICA - PERU AMAZON EXTENSION | INKATERRA RESERVA AMAZONICA

INCLUSIONS & DETAILS

Accommodation Jungle Lodge

Inclusions

Round trip transportation by land and river (Airport/Lodge/Airport)
 Welcome drink
 Welcome Gift
 Personalised welcome
 Buffet breakfast / a la carte lunch & dinner while at lodge
 Bottled water in room
 Tea Time
 Cocktail Hour
 English and Spanish Inkaterra Explorer Guide service
 Included excursions à la carte
 Entrance fees to Lake Sandoval

Inclusions

Exclusions

International and internal flights not indicated
 Visa and reciprocity fees (if applicable)
 Airport tax (if applicable)
 Travel Insurance
 Personal expenses
 Optional activities not mentioned in itinerary
 Any items not mentioned as included
 Gratuities for tour guides/drivers
 Extra beverages

Difficulty Rating 2 (light adventure - average fitness required)

Single Surcharge A single supplement surcharge applies and is subject to availability. Please contact us for more information.

Notes Prices are based on per person, twin share. Prices are correct at time of publishing but are subject to change at any time. All entrance fees are subject to change without prior notice.

Price Dependent upon Seasonality and availability at time of booking.

TRIP CODE

PETSRA4

DURATION

4 Days

LOCATIONS

Peru, Amazon



SUSTAINABILITY