


ANTARCTICA - ANTARCTICA EXPRESS AIR CRUISE | OCEAN NOVA



TRIP CODE
ACTSAEAC
DEPARTURE
29/11/2024, 14/01/2025, 29/11/2025, 14/01/2026
DURATION
6 Days
LOCATIONS
Antarctic Peninsula


INTRODUCTION

Leaving from Ushuaia, take a journey through the Beagle Channel and to legendary Cape Horn. Cross the mythical waters of the Drake Passage and explore one of the most spectacular places on earth, the coldest, highest, windiest, driest, and remotest continent – Antarctica.

ITINERARY

DAY 1: Embarkation

Your journey begins in Ushuaia, Argentina. Board your expedition vessel and sail along the Beagle Channel towards Puerto Williams, Chile, the southernmost town in the world. Explore the surroundings before setting sail to Cape Horn.
**Please note boarding in Ushuaia is between 3:00 and 4:00pm, Please note boarding will close at 4:00pm.



DAY 2: Cape Horn

After an overnight crossing of Nassau Bay, you awake in full view of legendary Cape Horn! Weather permitting, board a Zodiac and be one of the few privileged adventurers to step foot on this famous and rarely visited island. Back on board, set sail towards Antarctica and cross the famous passage named in honour of Sir Francis Drake, the great 16th century British explorer.



ANTARCTICA - ANTARCTICA EXPRESS AIR CRUISE | OCEAN NOVA

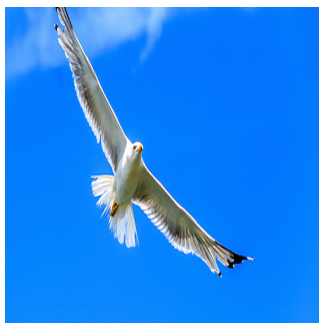
DAY 3: Drake Passage

As you sail through the Drake Passage en route to King George Island, in the South Shetland Islands, attend an engaging program of lectures and presentations. In the company of expert guides, watch for wildlife from the glass-enclosed lounge or from the outside decks. You may spot magnificent sea birds, such as albatrosses and petrels, as well as different species of whales on their way south to Antarctica.



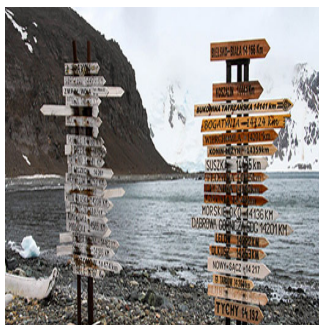
DAY 4: Drake Passage & Antarctica

After crossing the Antarctic Convergence, the environment changes noticeably. Keep your camera ready, as this is the time to watch for the first icebergs and the first sight of Antarctic land. Reaching the South Shetland Islands, sail in ice-filled bays, while enjoying the company of sea birds, penguins, seals and whales. Board a Zodiac for your first memorable shore visit to a penguin colony. Taking advantage of the endless Antarctic daylight, exploration will continue well into the evening.



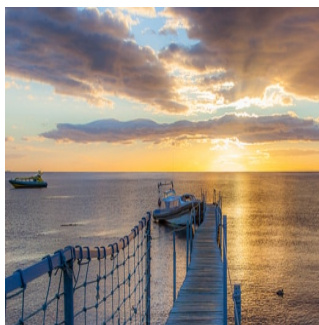
DAY 5: King George Island & Return Flight


Upon reaching King George Island, disembark at Fildes Bay and explore the area, such as the Chilean Base Frei and the Russian Base Bellingshausen. Bid farewell to Antarctica before boarding the flight back to Punta Arenas, Chile. Upon arrival, transfer to your hotel for the night. (Note: Meals in Punta Arenas are at your leisure and not included in the program.).



DAY 6: Departure

After breakfast, transfer to the Punta Arenas airport for your onward flight



TRIP CODE
ACTSAEAC
DEPARTURE
29/11/2024, 14/01/2025, 29/11/2025, 14/01/2026
DURATION
6 Days
LOCATIONS
Antarctic Peninsula


INCLUSIONS & DETAILS

Accommodation Hotel & Cabin On board a Ship

INCLUSIONS

Comprehensive pre- and post-voyage information material.
 Accommodation on board during your voyage.
 Loan of waterproof boots for excursions in Antarctica, contingency plan, and IAATO passenger fee.
 All guided excursions, as well as lectures and entertainment on board.
 Daily buffet breakfast, à la carte lunch and dinner, as well as wine, beer, juice, soft drinks, coffee, tea, hot chocolate, cappuccino, water, and snacks on board the ship.
 Charter flights from King George Island to Punta Arenas.
 One nights stay with breakfast in Punta Arenas.
 Special access to Explorers House for guests in Punta Arenas.
 Group transfers from the hotel in Punta Arenas to airport on final day.

Inclusions

EXCLUSIONS

International or domestic flights, unless specified
 Transfers not mentioned in the itinerary
 Visa and reciprocity fees (if applicable)
 Airport arrival or departure taxes
 Vaccination charges
 Travel insurance
 Hotels and meals not included in itinerary
 Optional excursions not included in the itinerary
 Optional activity surcharges
 All items of a personal nature, including but not limited to gratuities, select drinks, laundry services, personal clothing, medical expenses, wi-fi, email or phone charges.

Difficulty Rating 2 (light adventure)

Single Surcharge Available upon request, contact us for more details.

Notes Prices are based on per person, and may be based off quad/triple/ or twin share cabins* (please contact us for more details)
 Prices are correct at time of publishing but are subject to change at any time.
 Itinerary is subject to change depending on weather and ice conditions.

Price Dependent upon Departure Date, Fuel Surcharges, Cabin Category, Currency Fluctuations, Seasonality & Availability.

TRIP CODE

ACTSAEAC

DEPARTURE

29/11/2024, 14/01/2025, 29/11/2025, 14/01/2026

DURATION

6 Days

LOCATIONS

Antarctic Peninsula



SUSTAINABILITY

As a member of IAATO we follow guidelines appointed by the Antarctic Treaty System to go above and beyond in support of minimizing negative impacts on this pristine landscape. We also encourage clients to look to book pre-and post- accommodation with us, where local businesses will be supported. Our clients also receive restaurant recommendations which support locally owned restaurants

We carefully select all ships we work with and choose smaller sized vessels to create less impact. We use a highly regulated, licensed vessel which is well equipped to operate in the Antarctic's delicate ecosystem. We view the voyage to the Antarctic as an expedition, not a sightseeing trip. Smaller boats such as ours can navigate narrow waterways and are far less polluting than the larger ships in Antarctic waters. By carrying less passengers, we have far less waste. The waste is carried back to the home port to allow for environmentally conscious waste management and disposal.

For more information on our sustainability policies, including how we are striving towards being a paperless organisation, click [HERE](#)

TRIP CODE
ACTSAEAC
DEPARTURE
29/11/2024, 14/01/2025, 29/11/2025, 14/01/2026
DURATION
6 Days
LOCATIONS
Antarctic Peninsula
