

## THE ARCTIC - THE GEOGRAPHIC NORTH POLE 16 DAYS | LE COMMANDANT CHARCOT



### INTRODUCTION

## NO SINGLE SUPPLEMENT ON SELECTED DEPARTURES\*

**With featured guest Sue Flood, British Photo Ambassador.**

Go to ninety degrees north! The greatest expeditions have been attempting to reach the North Pole periodically since the 16th century. This legendary destination both draws and inspires adventurers and dreamers who are looking to explore the other side of the globe.

Accompanying Frederick Cook, Robert Edwin Peary, and Roald Amundsen, who were among the the many who battled to accomplish this impossible objective, you will be one of the select few who attempt to complete the the journey, situated 700 km (435 miles) away from any land.

You will sail the waters near our planet's edge in a northerly direction from Spitsbergen, seeing scenery that changes constantly due to the shifting ice and light. Here, the natural world is in charge, conserving amazing species that you could be fortunate enough to encounter as your voyage goes on, such whales, seals, and polar bears! As you make your way towards the North Pole—the Holy Grail of all polar explorers—you will continue to explore this isolated, freezing realm!

The ice floe is continually drifting due to the winds and currents, and your ship's captain will move cautiously and humbly in an effort to reach the planet's northernmost point.

*\*Single Supplement waived on selected departures & cabins. Offer is correct at the time of publishing and only available until sold out on selected voyages and strictly limited availability. Not available on Superior Staterooms and Owners Suite. Prices are subject to change until the time of booking and terms and conditions apply. Please contact us for*

#### TRIP CODE

ACPOPNP

#### DEPARTURE

22/07/2025, 06/08/2025,  
21/08/2025, 12/07/2026,  
27/07/2026, 11/08/2026,  
27/08/2026

#### DURATION

16 Days

#### LOCATIONS

Spitsbergen, Geographic North Pole



## THE ARCTIC - THE GEOGRAPHIC NORTH POLE 16 DAYS | LE COMMANDANT CHARCOT

more information and enquire for details of offers and availability.

Prices are correct at time of publishing (16 July 2024) but are subject to change at any time until the time of booking and terms and conditions apply. Please contact us for more information and enquire for details and availability.

### ITINERARY

#### DAY 1: Longyearbyen & Embarkation

Today, you will embark from Longyearbyen from 4:00 pm to 5:00 pm, and the adventure sets sail at 6:00 pm. Longyearbyen is the capital of the Norwegian Svalbard archipelago, located on Svalbard's main island, and is the northernmost territorial capital on the planet. With winter temperatures dropping to below 40°C, the landscapes of this mining town are simply breathtaking. The glaciers, the mountains stretching as far as the eye can see and the untouched nature, make you feel like you're in completely unexplored territory.



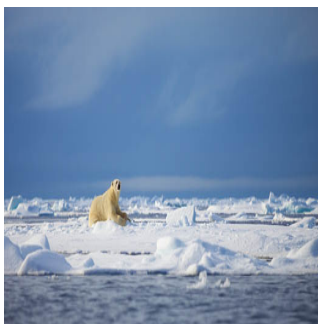
#### DAY 2: At sea along Spitsbergen

The largest island in the Svalbard archipelago, its name meaning "pointed mountains" in German, Spitsbergen is the last piece of land before the Arctic ice floe. Aboard your ship, you will sail along the extremely spectacular coastline of this icy land. Between millennial glaciers and rugged mountains, you will discover a jagged coastline, hollowed-out by fjords. A unique setting, the refuge of a particularly rich avifauna, offering you the possibility of taking fabulous photographs from the deck of your ship.



#### DAY 3: Navigating through the sea ice - Days 3 to 7

Enjoy the absolutely unique experience of sailing to the heart of the ice floe, this vast expanse of virgin, immaculate ice. The landscapes are constantly changing, shifting from a smooth, flat wilderness to a chaos of ice, then to channels of open water. Your ship will sail along these naturally open channels and through the areas where the frozen layer is thinnest, offering you the chance to experience magic maritime moments in the midst of drifting sea ice. It will also often be an opportunity to see a particular kind of fauna, totally dependent on the ice floe.



#### TRIP CODE

ACPOPNP

#### DEPARTURE

22/07/2025, 06/08/2025,  
21/08/2025, 12/07/2026,  
27/07/2026, 11/08/2026,  
27/08/2026

#### DURATION

16 Days

#### LOCATIONS

Spitsbergen, Geographic North Pole



**THE ARCTIC - THE GEOGRAPHIC NORTH POLE 16 DAYS | LE COMMANDANT CHARCOT**

**DAY 8: Geographic North Pole**

Defined by a 90° North latitude, the Geographic North Pole lies on the Earth’s rotational axis, at the intersection of all meridians. Plunged into darkness for six months of the year, then lit by the sun for the following six months, this mythical site, permanently covered in ice and remote from any land, has fascinated generations of explorers. So far, only a very few people have ever reached it: an exploit which is now accessible to you aboard Le Commandant Charcot.



**DAY 9: Navigating back through the sea ice - Days 9 to 13**


Experience once again the absolutely unique journey of sailing to the heart of the ice floe, exploring this vast expanse of untouched, immaculate ice. The landscapes continually evolve, transitioning from a serene, flat wilderness to a captivating chaos of ice, and then to expansive channels of open water. Your ship will gracefully navigate along these naturally open channels and traverse areas where the frozen layer is thinnest, providing another chance to immerse yourself in magical maritime moments amidst drifting sea ice. This presents yet another opportunity to observe a specific type of fauna, entirely dependent on the ice floe.



**DAY 14: At sea along Spitsbergen - Days 14 to 15**

The largest island in the Svalbard archipelago, its name meaning “pointed mountains” in German, Spitsbergen is the last piece of land before the Arctic ice floe. Aboard your ship, you will sail along the extremely spectacular coastline of this icy land. Between millennial glaciers and rugged mountains, you will discover a jagged coastline, hollowed-out by fjords. A unique setting, the refuge of a particularly rich avifauna, offering you the possibility of taking fabulous photographs from the deck of your ship.




<b>TRIP CODE</b>
ACPOPNP
<b>DEPARTURE</b>
22/07/2025, 06/08/2025, 21/08/2025, 12/07/2026, 27/07/2026, 11/08/2026, 27/08/2026
<b>DURATION</b>
16 Days
<b>LOCATIONS</b>
Spitsbergen, Geographic North Pole


**THE ARCTIC - THE GEOGRAPHIC NORTH POLE 16 DAYS | LE COMMANDANT CHARCOT**

**DAY 16: Disembark in Longyearbyen**

Arrive early morning in Longyearbyen and disembark around 8am. Longyearbyen is the capital of the Norwegian Svalbard archipelago, located on Svalbard’s main island, and is the northernmost territorial capital on the planet. With winter temperatures dropping to below 40°C, the landscapes of this mining town are simply breathtaking. The glaciers, the mountains stretching as far as the eye can see and the untouched nature, make you feel like you’re in completely unexplored territory.



<b>TRIP CODE</b>
ACPOPNP
<b>DEPARTURE</b>
22/07/2025, 06/08/2025, 21/08/2025, 12/07/2026, 27/07/2026, 11/08/2026, 27/08/2026
<b>DURATION</b>
16 Days
<b>LOCATIONS</b>
Spitsbergen, Geographic North Pole


**INCLUSIONS & DETAILS**

<b>Accommodation</b>	Cabin on board a ship
<b>Inclusions</b>	<p><b>INCLUSIONS</b></p> <p>Cabin accommodation whilst on board Le Commandant Charcot  Flight Paris/Longyearbyen on Embarkation Day  Group transfer from airport to the pier for embarkation  Meet &amp; greet at the airport by our local English-speaking representative.  All meals whilst on board including snacks  Open Bar (excluding premium brands)  Room Service &amp; Mini Bar (excluding Champagne)  All scheduled landings and excursions, conditions permitting  Guiding and lectures by expedition team  Complimentary Polar expedition jacket (yours to keep)  Free use of rubber boots for shore excursions  All port taxes  Comprehensive pre and post voyage informational material  Free WIFI</p> <p><b>EXCLUSIONS</b></p> <p>Airfares other than specified  Pre and post land arrangements and accommodation  Visa and reciprocity fees (if applicable)  Travel Insurance  Personal expenses such as laundry  Gratuities for the crew (recommend US\$15 per person per day)  Optional Activities whilst on-board</p>
<b>Difficulty Rating</b>	2 (Light Adventure)

**THE ARCTIC - THE GEOGRAPHIC NORTH POLE 16 DAYS | LE COMMANDANT CHARCOT**

<b>Single Surcharge</b>	Subject to availability upon request, contact us for more details.
<b>Notes</b>	<p>One way flight from Paris to Longyearbyen is included in cruise cost. We highly recommend to arrange at least one night in Paris prior to departure.</p> <p>Prices are based on per person, twin share* (unless otherwise stated for triple/quad cabins)</p> <p>Prices are correct at time of publishing but are subject to change at any time.</p> <p>Itinerary is subject to change depending on weather and ice conditions</p>
<b>Price Dependent upon</b>	Departure date, fuel surcharges, cabin category, currency fluctuations, seasonality and availability.

**SUSTAINABILITY**

<b>TRIP CODE</b>	ACPOPNP
<b>DEPARTURE</b>	22/07/2025, 06/08/2025, 21/08/2025, 12/07/2026, 27/07/2026, 11/08/2026, 27/08/2026
<b>DURATION</b>	16 Days
<b>LOCATIONS</b>	Spitsbergen, Geographic North Pole
	